



ERNE FITTINGS MIDDLE EAST

en



WE SUPPORT



ERNE FITTINGS

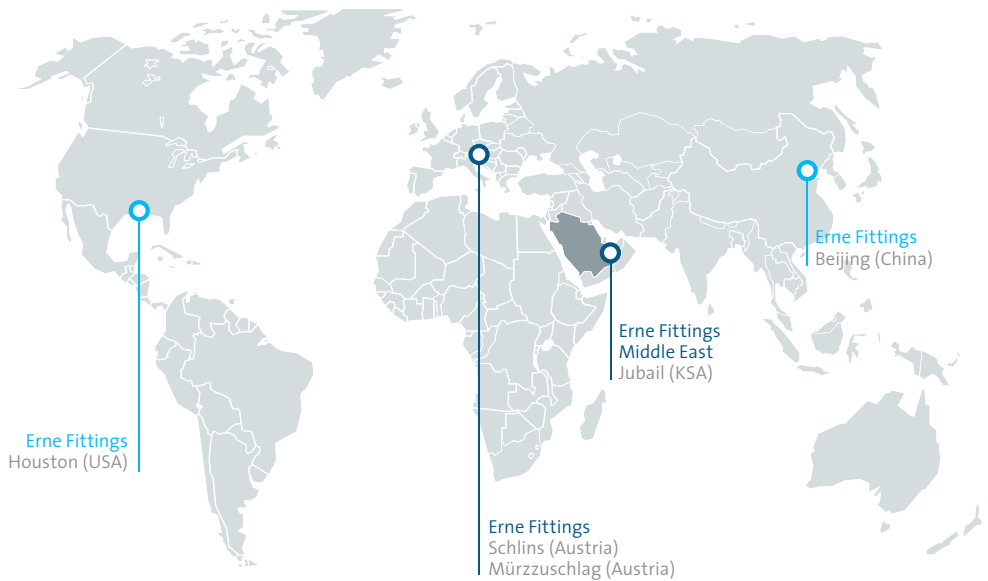
Erne Fittings was founded in 1920 and has been successfully completing international projects since the early 1970s. The company is nowadays the world's leading premium manufacture and supplier of butt-weld fittings in the approved market with operations in Austria, USA, Middle East and China.

EMPOWERED BY EXPERIENCE

Profound knowledge of applications, materials and standards and extensive technical expertise ensure that international projects run smoothly and play a vital role when it comes to successful collaboration with customers and suppliers. This makes Erne Fittings the preferred partner in the complex application fields of gas, nuclear, offshore, energy and chemicals.

ERNE EXPERIENCE ADVANTAGES

- > Almost 100 years of production experience
- > Handling international projects since more than 40 years
- > Subsidiaries all over the world
- > World's highest approval level



○ Sales and production ○ Sales
Logistic services in Schlins (Austria) and Houston (USA)



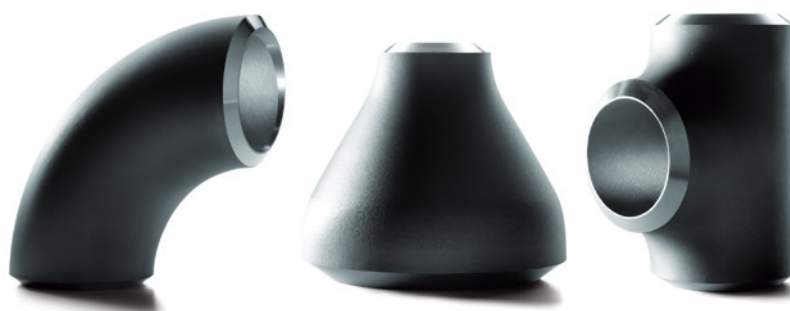
Together with the two production sites in Austria and a fully automated high rack shelving warehouse in Schlins, Erne Fittings guarantees its customers availability of more than 95% for the entire stock program.

ERNE FITTINGS MIDDLE EAST HAS EXPANDED THE PRODUCTION PROGRAM UP TO 24" OD.

EFME PRODUCTION

Erne Fittings Middle East (EFME) sets international quality standards for butt-weld fittings (elbows and reducers). The premium products are the result of high technological expertise in moulding, heat treatment and weld-end preparation as well as intensive research, efforts and efficient production processes.

PRODUCT RANGE



MATERIALS

- > Carbon steel: WPB, WPL6, WPC
- > High Yields: WPHY42, 52, 60, 65, 70
- > Low alloy steel: WP5, 9, 11, 22
- > Carbon steel: P235GH, S235

DIMENSIONS

- > Elbows: 1" - 24" / 33,4 - 609,6 mm
- > Reducers: 1" - 12" / 33,4 - 323,9 mm

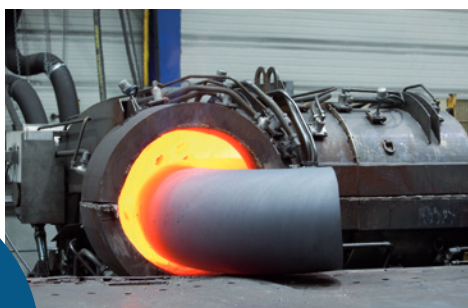
INPUT MATERIAL

- > Seamless pipes

MOST IMPORTANT PRODUCT STANDARDS

- > ASTM A234, ASTM A420, ASTM A860
- > ASME B 16.9, ASME B 16.25
- > EN 10253
- > MSS SP 75

**ELBOWS
FROM
1" TO 24"**



ERNE FITTINGS MIDDLE EAST (EFME)

is the gateway to Middle Eastern market and the sole producer of butt-weld fittings in GCC (Gulf Cooperation Council).

As part of the international Erne Group, Erne Fittings Middle East is supported by 100 years of experience that Erne Fittings has gained working on countless international projects.

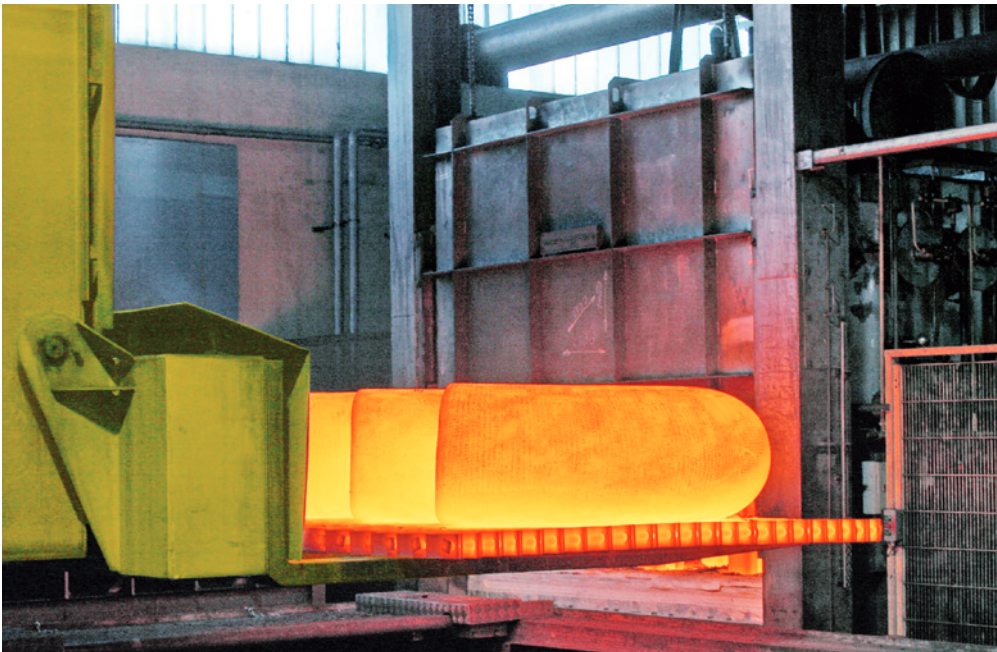
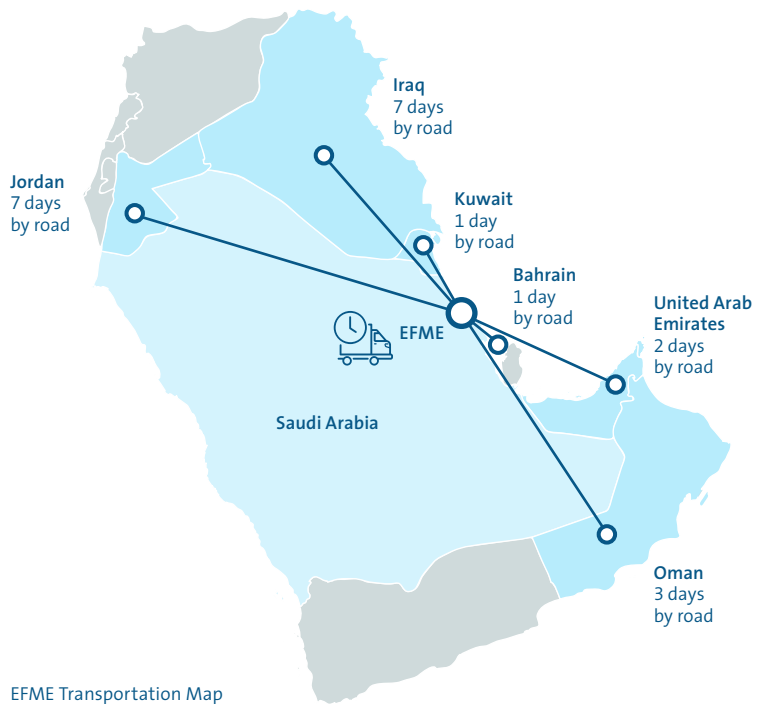
FAST AND FLEXIBLE – EFME LOGISTICS ADVANTAGES

- > Short delivery times in GCC due to local production
- > Flexible, prompt and reliable
- > International logistics agreements with forwarding companies for main supply zones
- > Packaging according to Erne Overseas Standard as well as customer-specific logistics solutions
- > Due to 3,000 tons of pipe raw material most of the products are available at all time

EFME PRODUCTION ADVANTAGES

- > Modern production site with the latest technologies
- > First class quality based on European standards
- > Extensive knowledge of customer requirements and applications
- > Locally-based employees with cultural understanding

SHORT DELIVERY TIMES DUE TO LOCAL PRODUCTION



SAFETY IS BEING ABLE TO COUNT ON BOTH EXPERIENCE AND EXPERTISE.

EXCERPT CUSTOMER APPROVALS

> ADCO	> ORPIC
> ADGAS	> PDO*
> ADMA-OPCO	> Qatar Gas
> ADNOC Distribution	> Qatar Petroleum
> BAPCO	> Reliance Industries Limited
> Bahrain National Gas Company	> SABIC
> CRN	> SADARA
> ENPPI	> SAHARA
> Exxon Mobil	> SATORP
> Fertil	> Saudi Aramco
> GASCO	> Shell
> JANA Chemicals	> SINOPEC
> KNPC*	> Takreer
> KOC*	> Tasnee
> MA'ADEN	> Zadco
> OXY (Occidental)	

*under progress

EXCERPT OFFICIAL APPROVALS

> EN ISO 9001	> Canadian Registration
> PED 2014/68/EU	> Bureau Veritas
> AD Merkblatt 2000	



EFME LABORATORY

EFME has its own laboratory with state-of-the-art equipment. The majority of the required testing is performed in-house by qualified technicians to achieve optimum quality control. Furthermore, for any additional testing services which are outside of the EFME range are performed at our independent laboratory which is based in Erne Fittings Austria and is an authorized testing laboratory in accordance to EN ISO 9712.





Erne Fittings Middle East
Road 106, Third Industrial Support Area
35729 Al Jubail, Kingdom of Saudi Arabia

T +966 13 340 8191, F -8197
jubail@ernefittings.com
ernefittings.com