



ERNE FITTINGS

THE SAFE CONNECTION

en



SAFETY IS BEING ABLE TO COUNT ON BOTH EXPERIENCE AND EXPERTISE.

ERNE PRODUCTION

Erne Fittings puts their passion and perfectionism into manufacturing pipe fittings for permanent welds (butt-weld fittings). The company produces over 5,000 items in various dimensions, materials and wall thicknesses. Due to its world's largest tool and machine park, Erne Fittings can provide products range from standard to customized solutions.

PRODUCT RANGE



DIMENSIONS

> ½ – 42" / 21.3 – 1067 mm

INPUT MATERIAL

> Seamless pipes / forged sleeves
> Welded pipes

MATERIALS

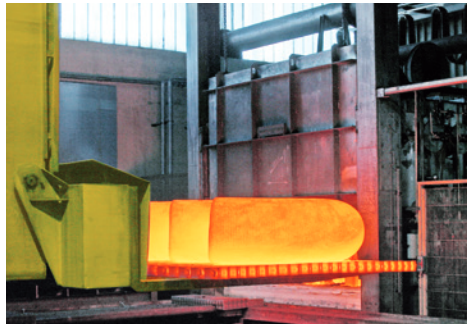
- | | |
|--------------------|--------------------|
| > Unalloyed steels | > Ni-alloys |
| > Alloy steels | > Copper alloys |
| > Stainless steels | > Aluminium alloys |
| > Duplex steels | > Titanium |

MOST IMPORTANT PRODUCT STANDARDS

- | |
|---|
| > EN 10253 |
| > DIN 2605, 2615, 2616, 2609 |
| > NF A 49-281, A49-289 |
| > ASME SA-235, SA-403, SA-420, SA-815, SA-960 |
| > ASTM A234, A420, A403, A815, A860, A960, B366 |
| > MSS SP 75, SP 43 |
| > CSA Z245.11 |

ERNE PRODUCTION ADVANTAGES

- | |
|---|
| > Largest tool park in the world and consequently a wide and varied range of products |
| > Extensive production expertise gained through decades of experience |
| > Consistently high quality |
| > Ever-growing machine park |
| > Special solutions possible thanks to the company's flexibility |
| > Fully- and half automated production equipment |
| > Highest level of technical support |



ERNE FITTINGS

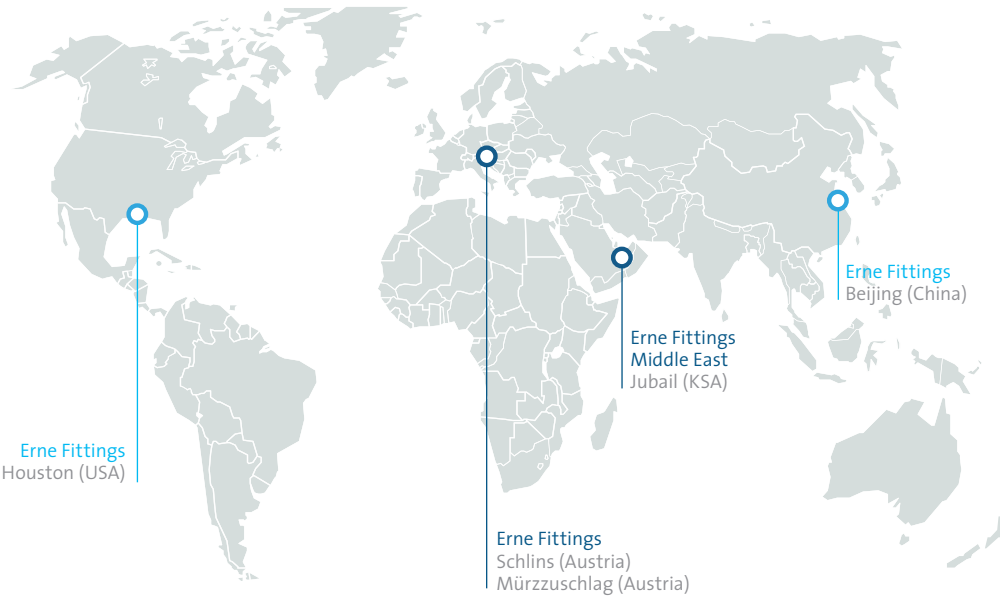
was founded in 1920 and has been successfully completing international projects since the early 1970s. The company is nowadays the world's leading premium manufacture and supplier of butt-weld fittings in the approved market with operations in Austria, USA, Middle East and China.

EMPOWERED BY EXPERIENCE

Profound knowledge of applications, materials and standards and extensive technical expertise ensure that international projects run smoothly and play a vital role when it comes to successful collaboration with customers and suppliers. This makes Erne Fittings the preferred partner in the complex application fields of gas, nuclear, offshore, energy and chemicals.

ERNE EXPERIENCE ADVANTAGES

- > Almost 100 years of production experience
- > Handling international projects since more than 40 years
- > Subsidiaries all over the world
- > World's highest approval level



- Sales and production
 - Sales
- Logistic services in Schlins (Austria) and Houston (USA)



SAFETY IS WHEN EVERYTHING IS SET OUT IN BLACK AND WHITE.

LABORATORY

Erne's independent, authorized testing laboratory according to EN ISO 9712 is fitted with state-of-the-art equipment and sets new industry standards. Employees with the best training possible (qualified to level 3 according to EN ISO 9712 and SNT-TC-1A) help the company ensure that customer objectives and requirements are met.



EXCERPT CUSTOMER APPROVALS

- | | |
|----------------------|-------------------|
| > ADCO | > Kinder Morgan |
| > ADMA-OPCO | > KOC |
| > Areva | > NORSEK |
| > BASF | > PDO |
| > BP | > Qatar Petroleum |
| > Chevron | > Saudi Aramco |
| > Enbridge Pipelines | > SHELL |
| > Energy Transfer | > Snam Rete Gas |
| > Exxon Mobil | > Spectra Energy |
| > Gasunie | > Statoil |
| > GDF SUEZ | > TOTAL |
| > General Electric | > Williams |

EXCERPT OFFICIAL APPROVALS

- | | |
|---------------------|------------------|
| > EN ISO 9001 | > DNV-GL |
| > PED 2014/68/EU | > Bureau Veritas |
| > AD Merkblatt 2000 | > Canadian |
| > RINA | Registration |

STOCK PROGRAM

With three production sites in Europe and Saudi Arabia, a fully automated high-rack shelving warehouse in Schlins, which contains 10,000 storage spaces and over 3,000 items as well as the new warehouse in the USA, Erne Fittings guarantees its customers availability of more than 95 % for the entire stock program. The stock program includes elbows, tees and reducers which are designed to ASTM or EN standards.



ERNE LOGISTICS ADVANTAGES

- > Uniquely high supply availability
 - > Central stock with fully automated warehouse management system
 - > International logistics agreements with forwarding companies for main supply zones
 - > Customer-specific logistics solutions
-





Erne Fittings GmbH
Hauptstraße 48
6824 Schönbühel, Austria/Europe

T +43 5524 501-0, F-930
office@ernefittings.com
ernefittings.com